

CUBUKLU VADI HOMES - siteplan

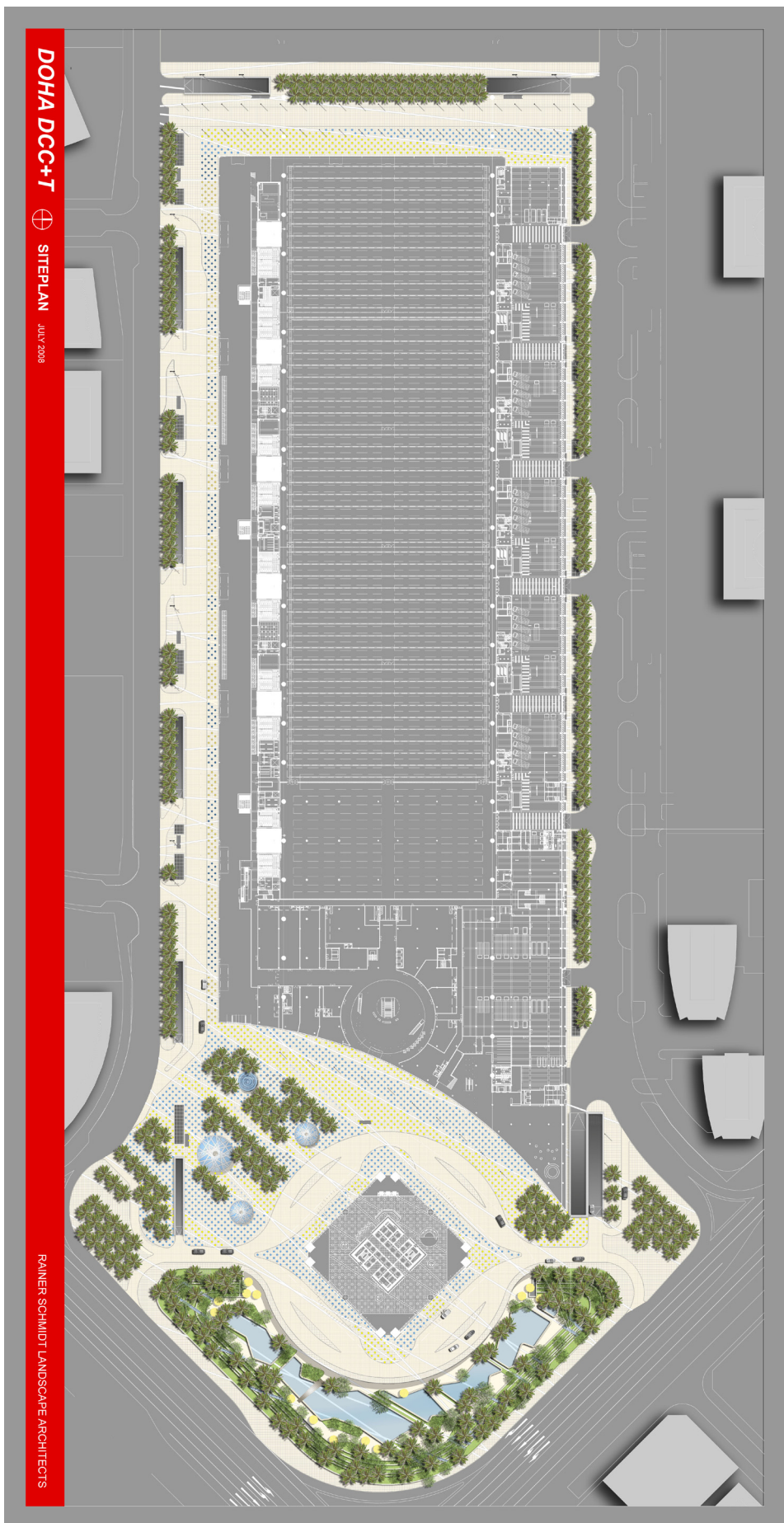




DONGGUAN HUANGQI SHAN CITY PARK - siteplan and perspective



DCC+T, DOHA CONVENTION CENTER AND TOWER - siteplan





**NATURAL STONE PAVERS**

0,745 x 0,745 x 0,14 m  
edges bevelled 2,5/2,5 mm  
joints 5 mm  
for cut pavers @ waves  
of 0,15 m = minimal side  
length - refer to Detail:  
L7-06.31 Waves - Faving

1 DETAIL

**NATURAL STONE COBBLE**

0,10 x 0,10 x 0,10 m  
edges bevelled 2,5/2,5 mm  
joints 5 mm

2 DETAIL

**NATURAL STONE CURB**

1,50 x 0,15 x 0,30 m  
edges bevelled 2,5/2,5 mm  
joints 5 mm

3 DETAIL

**TREE GRATE - 2 PIECES; FOR PALM PLANTING - PLAZA**  
(refer to Detail L7-06.36 1,2 - Tree Pit)

edges bevelled 2,5/2,5 mm

4 DETAIL

**2 CUT PAVERS; FOR PALM PLANTING - CEREMONIAL DROP-OFF**  
(refer to Detail L7-06.56 3, 4 - Tree Pit)

edges bevelled 2,5/2,5 mm

32 1400 - 006  
cut granite pavers -  
2 different pieces  
for tree pits at the  
Ceremonial Drop-Off

5 DETAIL

**4 CUT PAVERS; WATER JET ELEMENTS**  
(refer to Detail L7-06.11 - Dot Elements)

edges bevelled 2,5/2,5 mm

32 1400 - 006  
cut granite paver

6 DETAIL

**4 CUT PAVERS; DOT LIGHTS, DOT BENCHES, DOT PONDS**  
(refer to Details L7-06.41-45; L7-06.71; L7-06.21;

edges bevelled 2,5/2,5 mm

32 1400 - 007  
cut granite paver

7 DETAIL

Sheet - Legend  
32 1400 - XXX (cut paving)

NO.	DESCRIPTION	DATE
1	ISSUED FOR TENDER	2023/03/01
2	ISSUED FOR CONSTRUCTION	2023/03/01
3	ISSUED FOR CONSTRUCTION	2023/03/01
4	ISSUED FOR CONSTRUCTION	2023/03/01
5	ISSUED FOR CONSTRUCTION	2023/03/01
6	ISSUED FOR CONSTRUCTION	2023/03/01
7	ISSUED FOR CONSTRUCTION	2023/03/01
8	ISSUED FOR CONSTRUCTION	2023/03/01
9	ISSUED FOR CONSTRUCTION	2023/03/01
10	ISSUED FOR CONSTRUCTION	2023/03/01

**Doha Convention Center & Tower**

**Qatari Diar**  
Real Estate Investment Company

**Turner International**

**Murphy/Jahn**

**AKIP**

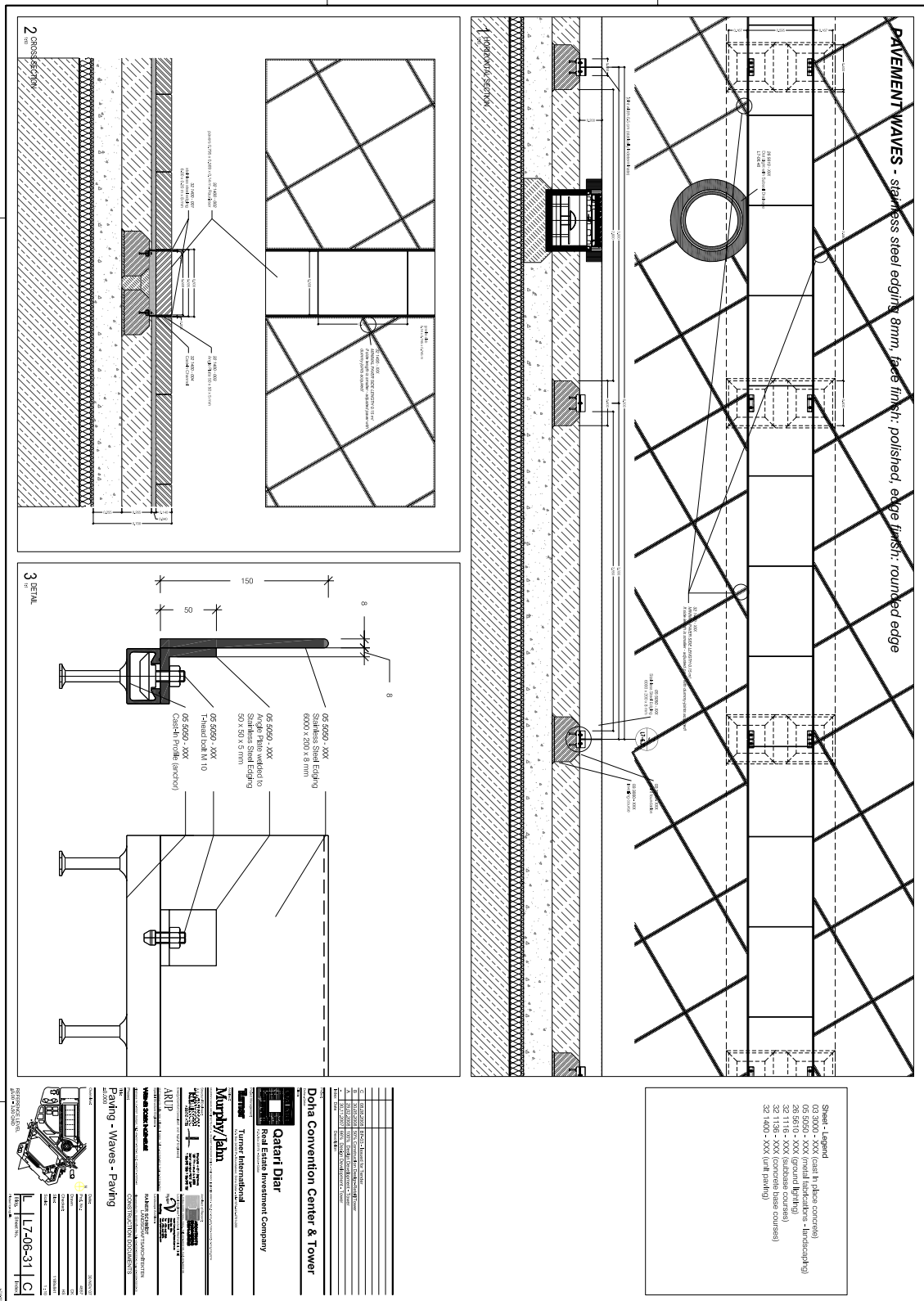
**Yousang Kim Architects**

**CONSTRUCTION DOCUMENTS**

**01 PAVING ELEMENTS**

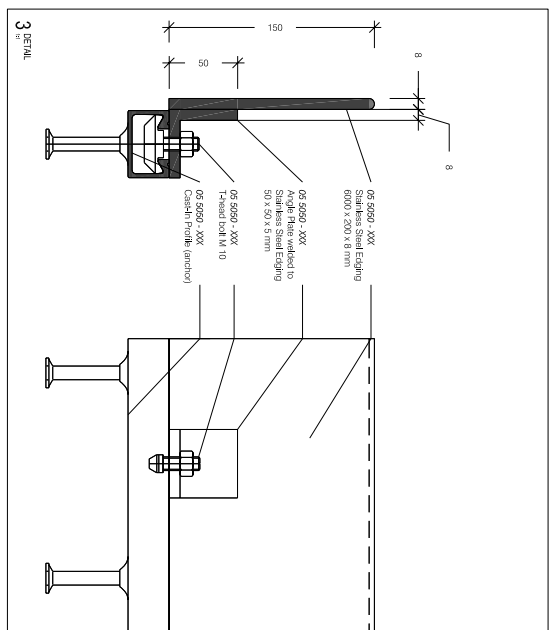
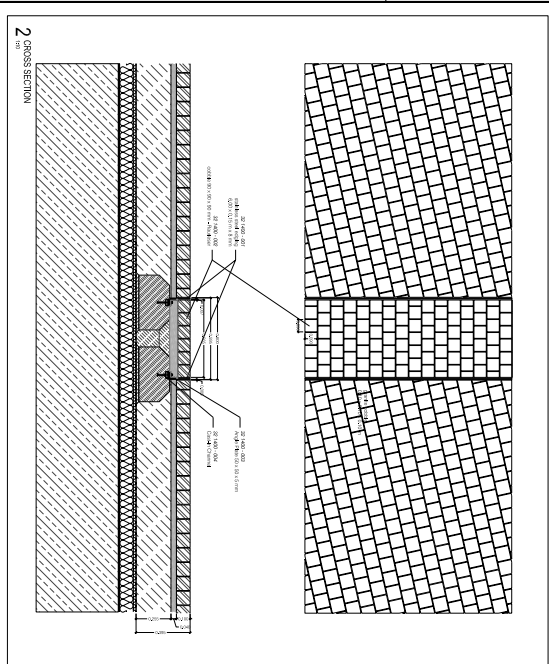
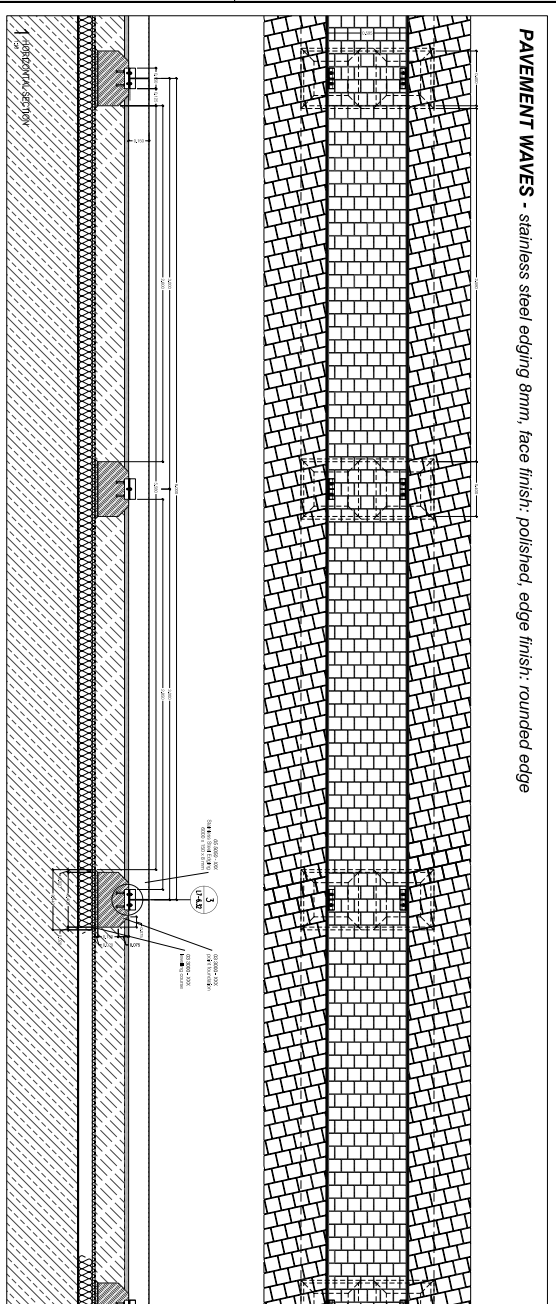
DATE: 2023/03/01  
SCALE: 1:10  
DRAWN: [Signature]  
CHECKED: [Signature]  
PROJECT: DOHA CONVENTION CENTER AND TOWER  
SHEET: L7-06.59 | C





DCC+T, DOHA CONVENTION CENTER AND TOWER - detail drawing

**PAVEMENT WAVES - stainless steel edging 8mm, face finish: polished, edge finish: rounded edge**



Sheet - Legend  
 03 5000 - XXX (cast in place concrete)  
 04 5000 - XXX (cast in place concrete)  
 26 5010 - XXX (ground lighting)  
 32 1116 - XXX (subbase courses)  
 32 1138 - XXX (course base courses)  
 32 1400 - XXX (fill paving)

01	GENERAL CONTRACTOR	Turner International
02	ARCHITECT	Rainer Schmidt Landscape Architects
03	MECHANICAL CONTRACTOR	Turner International
04	ELECTRICAL CONTRACTOR	Turner International
05	PLUMBING CONTRACTOR	Turner International
06	PAVING CONTRACTOR	Murphy/Jahn
07	CONCRETE CONTRACTOR	Turner International
08	LANDSCAPE ARCHITECT	Rainer Schmidt Landscape Architects
09	GENERAL CONTRACTOR	Turner International
10	GENERAL CONTRACTOR	Turner International
11	GENERAL CONTRACTOR	Turner International
12	GENERAL CONTRACTOR	Turner International
13	GENERAL CONTRACTOR	Turner International
14	GENERAL CONTRACTOR	Turner International
15	GENERAL CONTRACTOR	Turner International
16	GENERAL CONTRACTOR	Turner International
17	GENERAL CONTRACTOR	Turner International
18	GENERAL CONTRACTOR	Turner International
19	GENERAL CONTRACTOR	Turner International
20	GENERAL CONTRACTOR	Turner International
21	GENERAL CONTRACTOR	Turner International
22	GENERAL CONTRACTOR	Turner International
23	GENERAL CONTRACTOR	Turner International
24	GENERAL CONTRACTOR	Turner International
25	GENERAL CONTRACTOR	Turner International
26	GENERAL CONTRACTOR	Turner International
27	GENERAL CONTRACTOR	Turner International
28	GENERAL CONTRACTOR	Turner International
29	GENERAL CONTRACTOR	Turner International
30	GENERAL CONTRACTOR	Turner International
31	GENERAL CONTRACTOR	Turner International
32	GENERAL CONTRACTOR	Turner International
33	GENERAL CONTRACTOR	Turner International
34	GENERAL CONTRACTOR	Turner International
35	GENERAL CONTRACTOR	Turner International
36	GENERAL CONTRACTOR	Turner International
37	GENERAL CONTRACTOR	Turner International
38	GENERAL CONTRACTOR	Turner International
39	GENERAL CONTRACTOR	Turner International
40	GENERAL CONTRACTOR	Turner International
41	GENERAL CONTRACTOR	Turner International
42	GENERAL CONTRACTOR	Turner International
43	GENERAL CONTRACTOR	Turner International
44	GENERAL CONTRACTOR	Turner International
45	GENERAL CONTRACTOR	Turner International
46	GENERAL CONTRACTOR	Turner International
47	GENERAL CONTRACTOR	Turner International
48	GENERAL CONTRACTOR	Turner International
49	GENERAL CONTRACTOR	Turner International
50	GENERAL CONTRACTOR	Turner International

**Doha Convention Center & Tower**  
 Qatari Diar  
 Real Estate Investment Company

**Murphy/Jahn**  
 Turner International

**AMUP**  
 Rainer Schmidt Landscape Architects

**Paving - Waves - Cobble**

117-06-32 | C |



DCC+T, DOHA CONVENTION CENTER AND TOWER - detail drawing

**TREE PLANTING and IRRIGATION - PLAZA, south and north of CC tree-grates**  
**Installation depth: 1.57 m**  
**Special paving elements: refer to L7-06-59 - Paving Elements**

**1 HORIZONTAL SECTION**

**1.1 HORIZONTAL SECTION**

**1.2 HORIZONTAL SECTION**

**2 PLAN VIEW**

**2a DETAIL**

**TREE PLANTING and IRRIGATION - Ceremonial Drop-Off planter box - stainless steel with optional bench**  
**Installation depth: 0.95 m**  
**Special paving elements: refer to L7-06-59 - Paving Elements**

**3 HORIZONTAL SECTION**

**3 HORIZONTAL SECTION**

**4 PLAN VIEW**

Sheet 4 of 4 pages  
 03 2017 - XXX (after cast-in-place concrete)  
 05 2007 - XXX (metal furniture - landscaping)  
 20 05 14 - XXX (conductors and cables) -> HORDER  
 22 11 14 - XXX (subbase courses)  
 22 11 19 - XXX (concrete base courses)  
 22 06 00 - XXX (planting)

**Doha Convention Center & Tower**  
 Qatar Diar  
 Real Estate Investment Company

**Murphy/Jahn**  
 Turner International

**AKIP**  
 Architectural & Interior Planning

**Landscaping Details 03 - Tree Pits/Trunks**

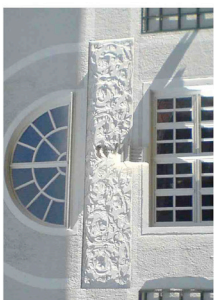
**L7-06-52 | C**

DCC+T, DOHA CONVENTION CENTER AND TOWER - construction site, October 2008





MJS, MARIA-JOSEPHA-STR. - siteplan



Plannummer	Plandatum	Multiblock	Interne Plannummer
	17.03.2009	1 : 200	
Planbezeichnung	Bauenteil 1 bis Bauenteil 5, Aussenanlagen Lageplan		
Bemerkung	Aussenanlagen Verentwurf - Viertel Ornament		
	Bauenteil 2	Bauenteil 3	Bauenteil 4
	Bauenteil 5	Bauenteil 1	Bauenteil 1
<p><b>MJS, Maria-Josepha-Strasse</b></p> <p>Standort: Maria-Josepha-Strasse, Monreithalle Garten- und Landschaftsarchitektur Fl. Nr. 81 und Fl. Nr. 74</p> <p>Bauherr: Muehlbauer Bauelemente-Gesellschaft AG Planungsbüro für Gebäudedaten www.muehlbauer.at</p> <p>Verantwortlich durch: MEG AG Bauwerk-Engineering-Gesellschaft GmbH Char.-von-Klein-Eng 18, 80333 München</p> <p>Architekt: Ruck Architekten   80477 München Neumarktstr. 5/10, 80333 München</p> <p>Bauleitung: BFL München Neumarktstr. 5/10, 80333 München</p> <p>Landschaftsarchitektur: Burger Landschaftsarchitekten - Susanne Burger und Peter Klein Partnerarchitekten Landschaftsarchitekten   80333 München Georg-Bräuer-Str. 11, 80802 München</p> <p>Projektleitung: CBP Projektmanagement GmbH</p> <p>Tragwerksplanung: Huber &amp; Partner GmbH, Beratende Ingenieure für Bauwesen (fB) Eisenstr. 10, 80809 München</p> <p>HLKB: Huber &amp; Partner Bauwerkstatt für Energie- und Gebäudetechnik GmbH Eisenstr. 10, 80809 München</p> <p>Elektrik: M&amp;E Elektrotechnik</p> <p>Bauphysik: Müller BMA Robert-Koch-Str. 11, 81152 Pfaffing</p>			

